



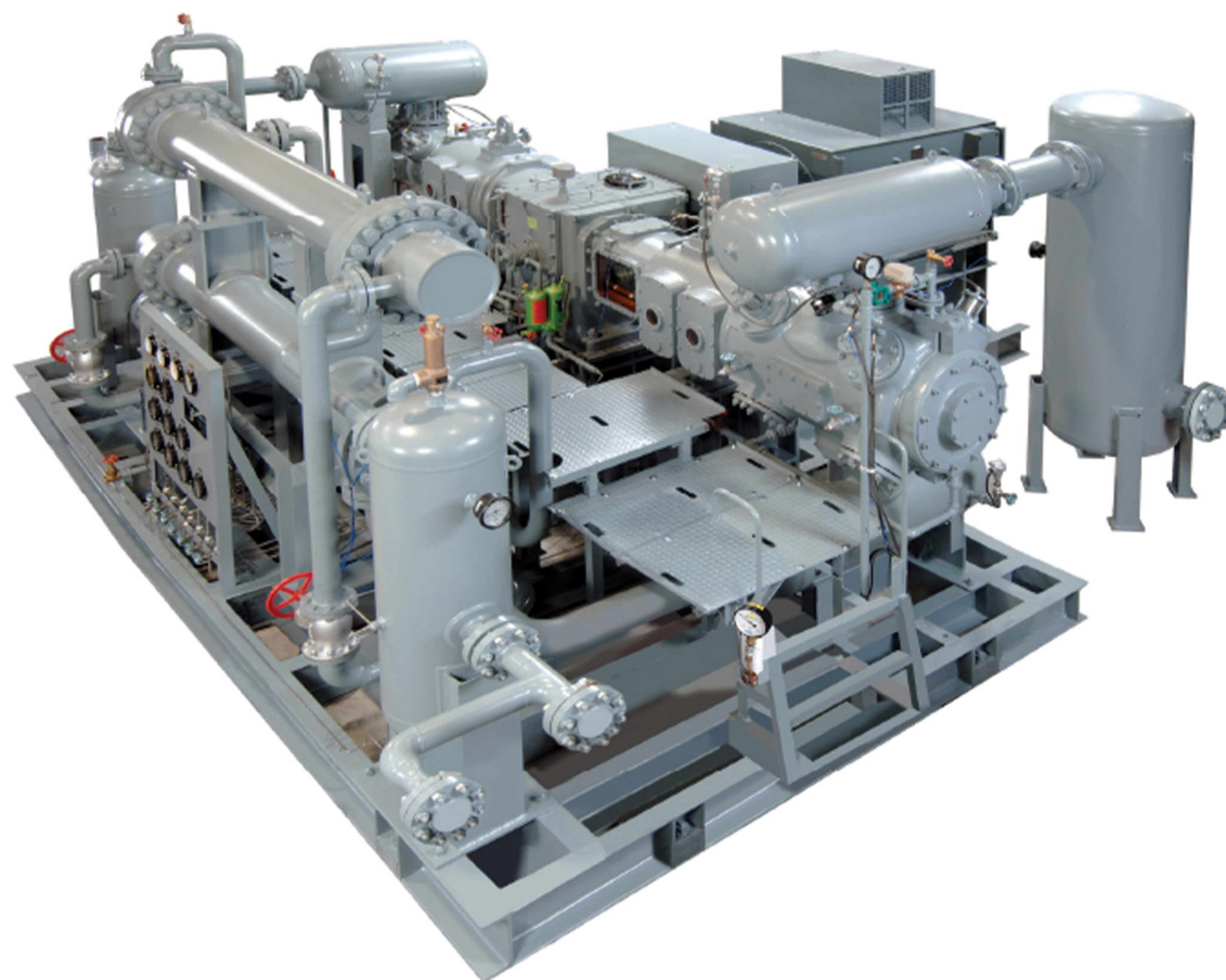
ASA Company

# Process Gas Compressor Package

Reciprocating







### Process Gas Compressor

- Capacity: Max.  $100 \frac{Nm^3}{min}$
- Out Pressure: Max. 300 Bar(g)
- Electromotor Power: Max. 700 Kw
- Fluid Type: HC, H<sub>2</sub>, Natural gas, O<sub>2</sub>, other process gas
- Electrical panel with inverter or soft starter or contactor relay
- Control panel: Siemens plc 1200 or plc 1500
- Instrumentation: Equipped with indicator switch and transmitter and HMI
- Distance piece: type C or D



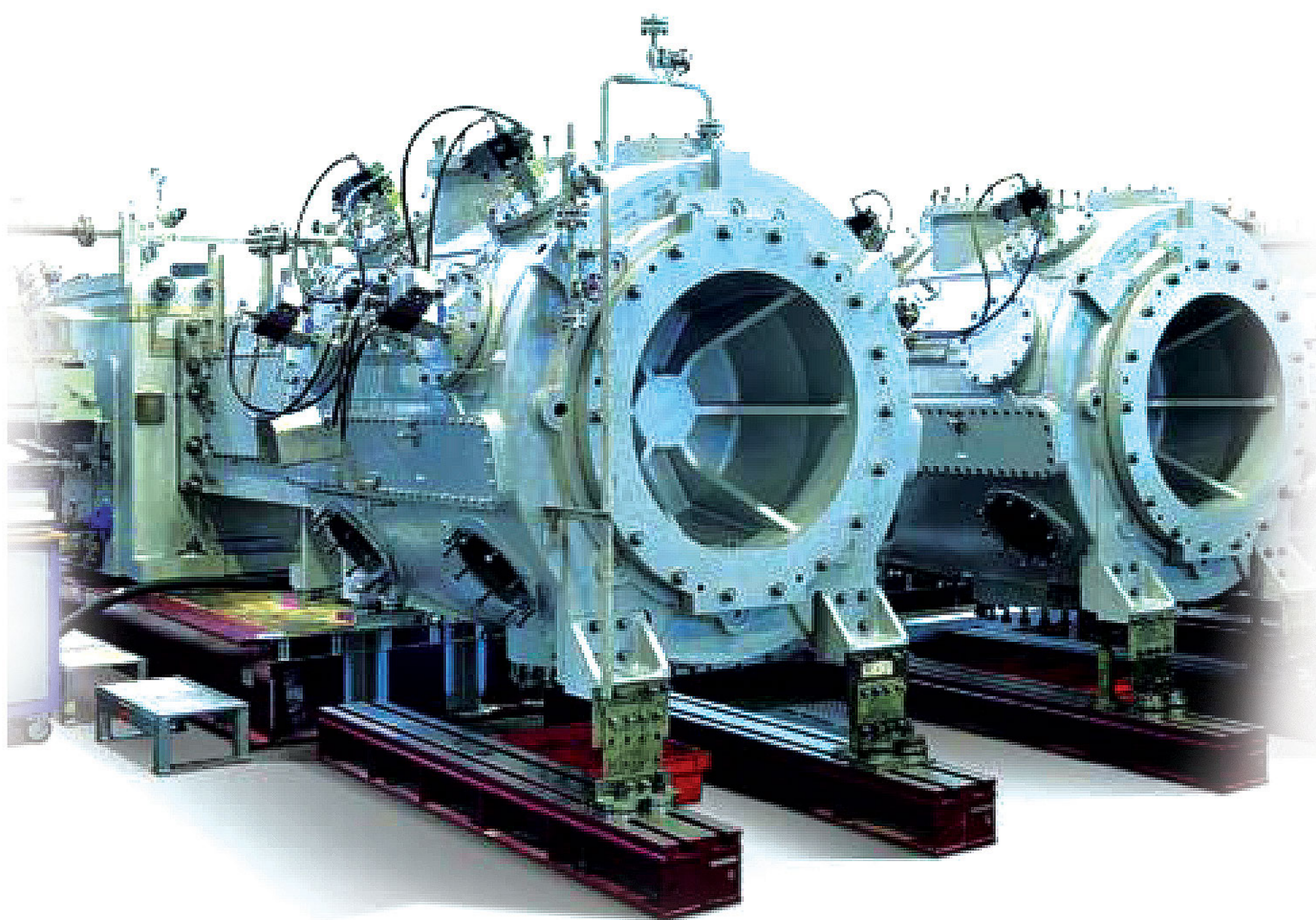


### Process Gas Compressor

- Capacity: Max.  $200 \frac{Nm^3}{min}$
- Out Pressure: Max. 300 Bar(g)
- Electromotor Power: Max. 4000 Kw
- Fluid Type: HC, H<sub>2</sub>, Natural gas, N<sub>2</sub>, Co<sub>2</sub>, O<sub>2</sub>, other gases
- Electrical panel with inverter or soft starter or contactor relay
- Control panel: Siemens plc 1200 or plc 1500
- Instrumentation: Equipped with indicator switch and transmitter and HMI
- Distance piece: type C







### Process Gas Compressor

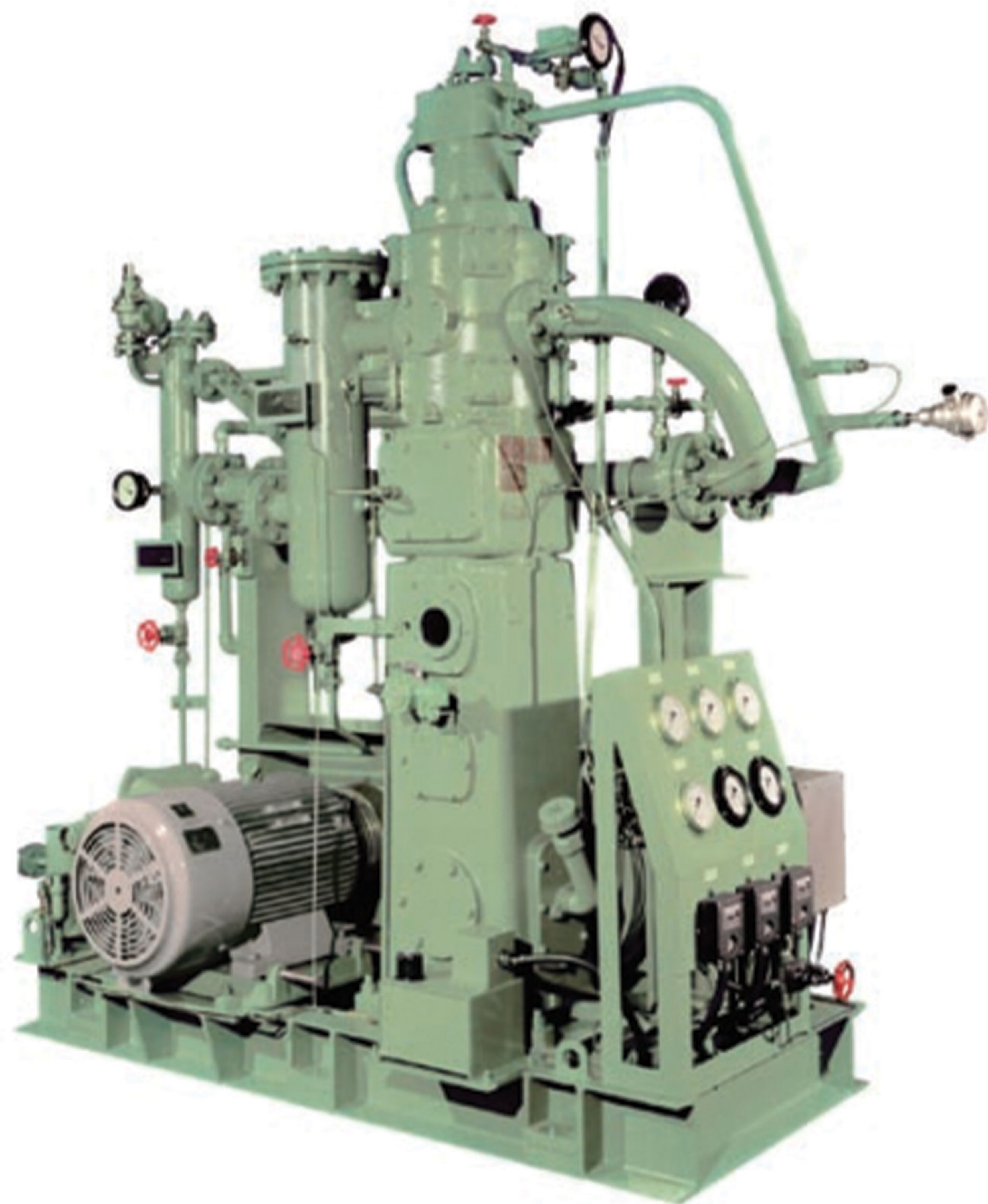
- Capacity: Max.  $300 \frac{Nm^3}{min}$
- Out Pressure: Max. 300 Bar(g)
- Electromotor Power: Max. 7500 Kw
- Fluid Type: HC, H<sub>2</sub>, NG, other gases
- Electrical panel with inverter or soft starter or contactor relay
- Control panel: Siemens plc 1200 or plc 1500
- Instrumentation: Equipped with indicator switch and transmitter and HMI
- Distance piece: type C





# AIR INSTRUMENT COMPRESSOR PACKAGE

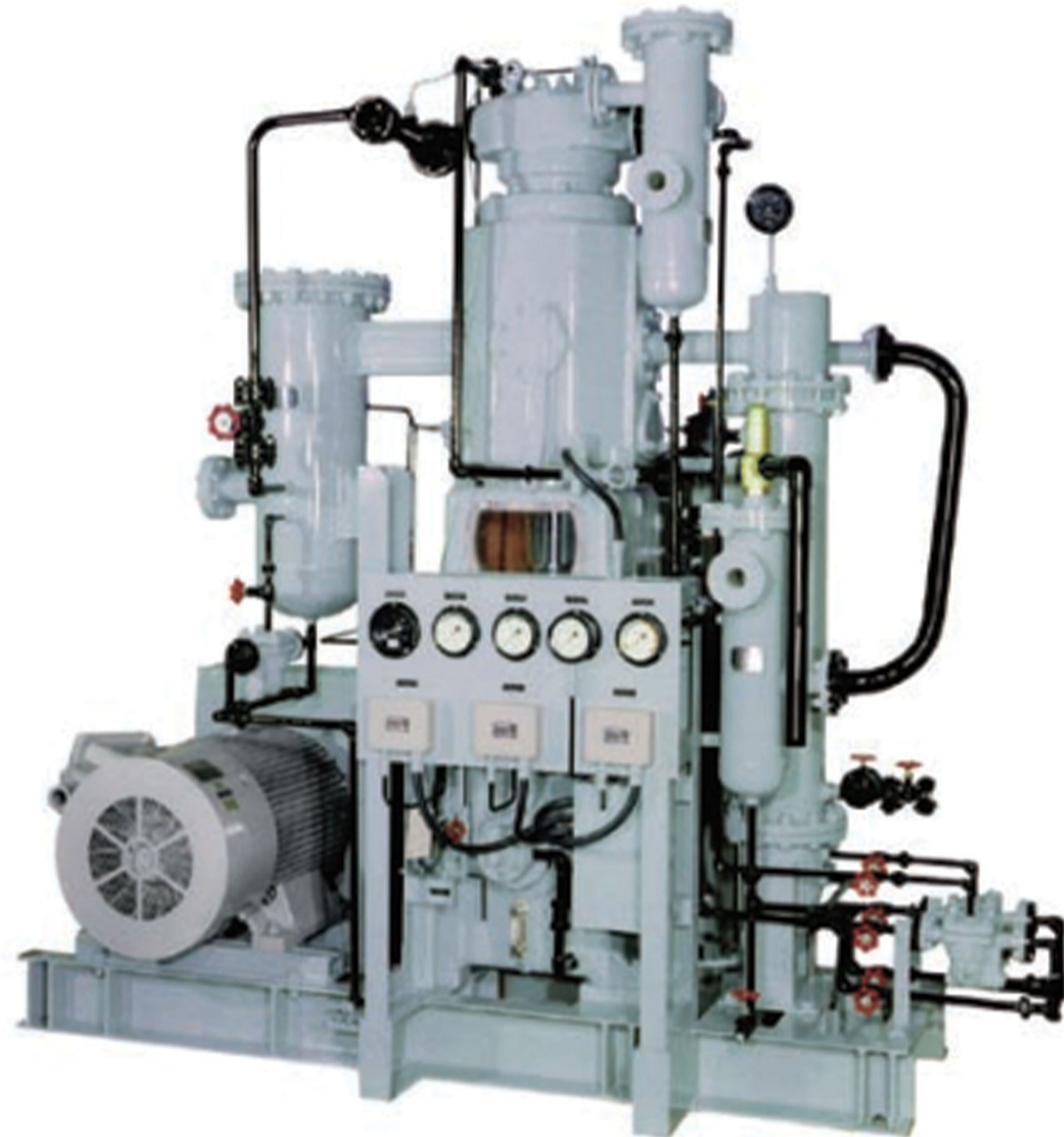




### Oil Free Reciprocating Compressor

- Capacity: 1-2  $\frac{Nm^3}{min}$
- Out Pressure: 12 Bar(g)
- Electromotor Power: MAX 20 Kw
- Fluid Type: Air Instrumentation & Plant
- Electrical panel with inverter or soft starter or contactor relay
- Control panel: Siemens plc 1200 or plc 1500
- Instrumentation: Equipped with indicator switch and transmitter and HMI
- Distance piece: type B





### Oil Free Reciprocating Compressor

- Capacity: 5-6  $\frac{Nm^3}{min}$
- Out Pressure: 12 Bar(g)
- Electromotor Power: MAX 50 Kw
- Fluid Type: Air Instrumentation & Plant
- Electrical panel with inverter or soft starter or contactor relay
  - Control panel: Siemens plc 1200 or plc 1500
- Instrumentation: Equipped with indicator switch and transmitter and HMI
  - Distance piece: type B

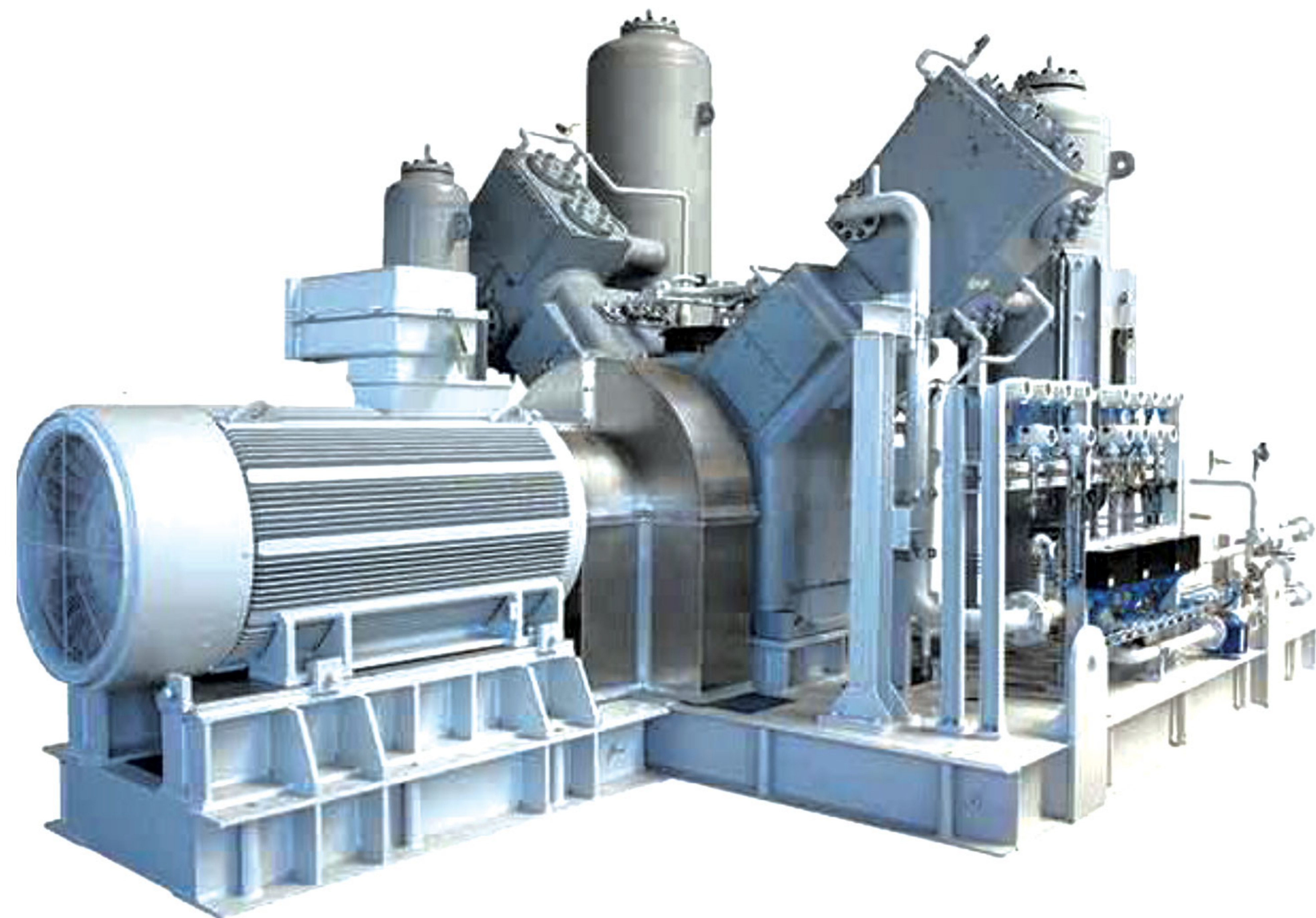




### Oil Free Reciprocating Compressor

- Capacity: 10-12  $\frac{Nm^3}{min}$
- Out Pressure: 12 Bar(g)
- Electromotor Power: MAX 90 Kw
- Fluid Type: Air Instrumentation & Plant
- Electrical panel with inverter or soft starter or contactor relay
- Control panel: Siemens plc 1200 or plc 1500
- Instrumentation: Equipped with indicator switch and transmitter and HMI
- Distance piece: type B

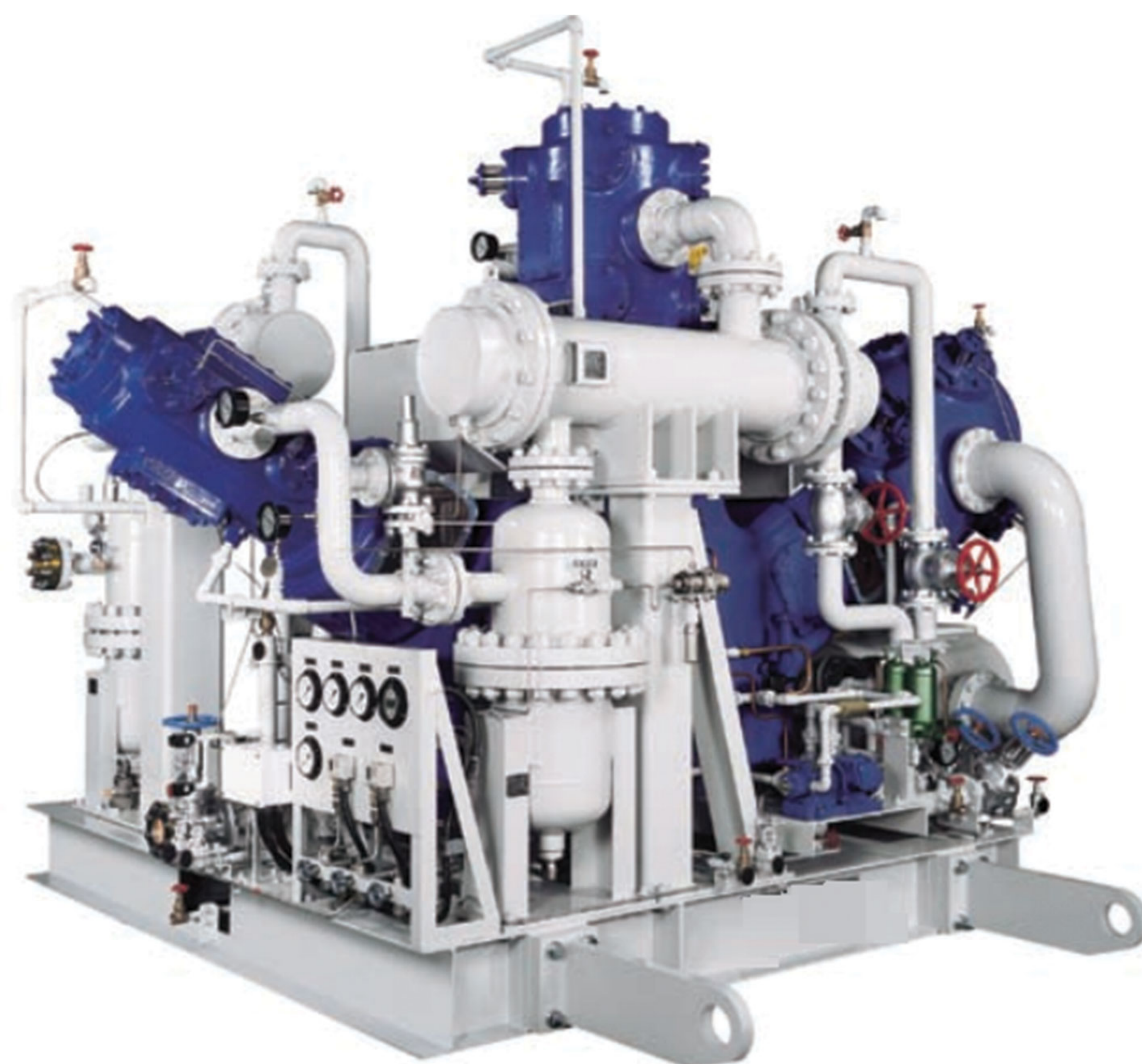




### Oil Free Reciprocating Compressor

- Capacity: 15-17  $\frac{Nm^3}{min}$
- Out Pressure: 12 Bar(g)
- Electromotor Power: MAX 140 Kw
- Fluid Type: Air Instrumentation & Plant
- Electrical panel with inverter or soft starter or contactor relay
- Control panel: Siemens plc 1200 or plc 1500
- Instrumentation: Equipped with indicator switch and transmitter and HMI
- Distance piece: type B

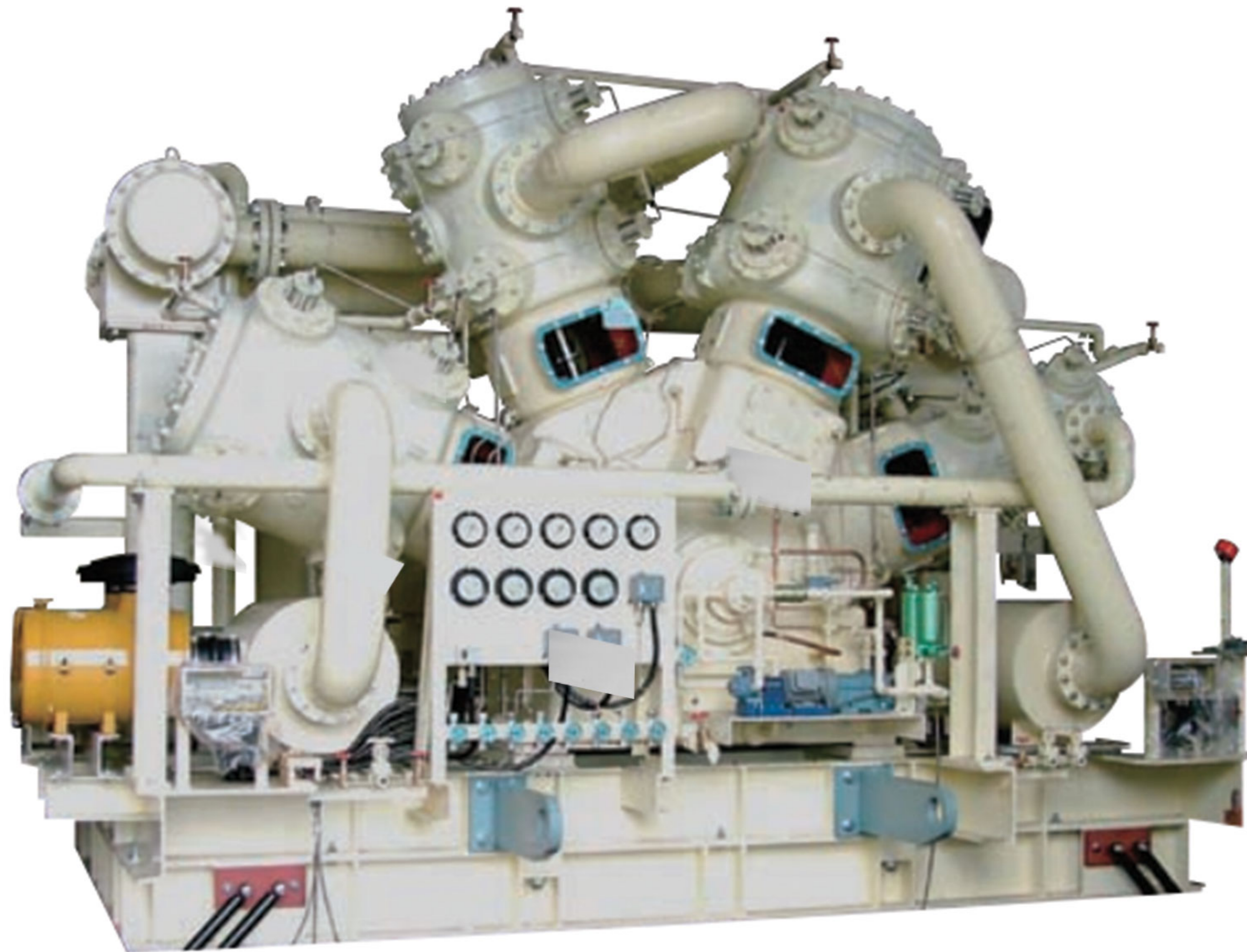




### Oil Free Reciprocating Compressor

- Capacity: 20-22  $\frac{Nm^3}{min}$
- Out Pressure: 12 Bar(g)
- Electromotor Power: MAX 180 Kw
- Fluid Type: Air Instrumentation & Plant
- Electrical panel with inverter or soft starter or contactor relay
- Control panel: Siemens plc 1200 or plc 1500
- Instrumentation: Equipped with indicator switch and transmitter and HMI
  - Distance piece: type B





### Oil Free Reciprocating Compressor

- Capacity: 25-32  $\frac{Nm^3}{min}$
- Out Pressure: 12 Bar(g)
- Electromotor Power: MAX 260 Kw
- Fluid Type: Air Instrumentation & Plant
- Electrical panel with inverter or soft starter or contactor relay
- Control panel: Siemens plc 1200 or plc 1500
- Instrumentation: Equipped with indicator switch and transmitter and HMI
- Distance piece: type B



**ASA** COMPANY

[www.asacomp.ir](http://www.asacomp.ir) & [www.asacomp.co](http://www.asacomp.co)

[info@asacomp.ir](mailto:info@asacomp.ir) & [info@asacomp.co](mailto:info@asacomp.co)

Tel: (+9821) 66047830 & 46871471-4

Fax: (+9821) 66048041 & 46877223

No.2-Floor1-Roz e Abi Building-Keshvarz St-Enqelab Blvd-Qods-Tehran-Iran

Post code:3751879786